

If you are visiting today, welcome!



We invite you to fill out a Connection Card found in the pew and place it in the offering plate. Members of the church leadership are always available to answer questions you may have. Please feel free to call (860) 647-9141 or e-mail office@southumc.com if you would like to learn more about the church or how you can get plugged in. We also invite you to join us for a time of fellowship following the 9:30 am service in Reception Hall, located next to the Sanctuary.



Now you can give using a text message!

Using your cell phone you can send a gift to the church by text message. The number is 860-512-7185 - then type in the text message the amount of your gift followed by one of the key words.

For general giving - \$ amount SUMC



Our sermons on YouTube are now accessible directly from our Church Website! ([www.southumc.com](http://www.southumc.com)) Click the link at the bottom of our Home page or on the Sermon Podcast page, and you will be taken to all of our uploaded sermons!!



**Young Women:** A new Young Women's Bible Study will begin on March 2 and will continue to meet each Monday evening in March from 6:30-8 pm at the Virginia Ryan Next Gen Home (21 Hartford Rd)! The Young Women's Bible Study is a great opportunity to get connected over tea and snacks in a relaxed, comfy, living room atmosphere, and the time of fellowship is focused on the Word of God and prayer with one another. If you're interested in attending or have questions, please text Catey: 802-274-4630

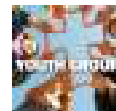
### Next Gen Updates

**Youth:** Thank you South Church for supporting the Youth's Souper Bowl of Caring Fundraiser for MACC! Together we raised over \$1,400 and brought in quite a bit of food for our hungry neighbors! Praise God for all of His blessings, and may He bless those who receive these gifts!

The next Winter Retreat due date is TODAY - turn in \$50 payment plus copies of Health Insurance Cards! We will be leaving by 4 pm on Friday, February 28, and will plan to return by mid-afternoon on Sunday, March 1! Please see the packing list outside of the Youth Room or Youth Office, and be sure to provide your Youth with enough cash for a Chick-Fil-A dinner and some snacks at Monadnock!

Feb 23<sup>rd</sup>  
Feb 28<sup>th</sup>

Youth Group at 6pm  
Youth gather for Retreat in Upper Ed Wing at 3pm



### Presents CHARITY GIVE BACK NIGHT

Partnerships with a Purpose  
Tuesday, February 25, 2020  
5:00pm - 9:00pm

Present flyer to server to have 10% of your bill donated to our charity  
At Maggie McFly's  
Manchester & Glastonbury  
Email Jeff Kieft (gjkieft@yahoo.com) for flyer



### South UMC ASH Wednesday Service

February 26 at 6:30pm  
in The Sanctuary  
(nursery care will be available)

Pastor John will bring an inspiring message and The Chancel Choir will sing as we embark on the Holy season of Lent for 2020.

Ash Wednesday is the first day of Lent in the Western Christian calendar. Occurring 46 days before Easter, it is a moveable feast that can fall as early as February 4 and as late as March 10.

According to the canonical gospels of Matthew, Mark and Luke; Jesus spent 40 days fasting in the desert, where he endured temptation by Satan. Ash Wednesday marks the beginning of this 40-day liturgical period of prayer and fasting or abstinence. Of the 46 days until Easter, six are Sundays. As the Christian sabbath, Sundays are not included in the fasting period and are instead "feast" days during Lent.

Ash Wednesday derives its name from the practice of placing ashes on the foreheads of adherents as a celebration and reminder of human mortality, and as a sign of mourning and repentance to God. The ashes used are typically gathered from the burning of the palms from the previous year's Palm Sunday.

### Funding Rise Against Hunger

We have scheduled another wonderful lunch packaging program for Saturday, April 4. We'll be signing up workers in a few weeks. Right now we need your money. The total cost for the minimum of 10,000 lunches is \$3452. The Outreach Committee can come up with a little of that, but we need more than a little. We will have people in Reception Hall after the 9:30 service and in The Café after that service, now through March 1 to receive your contributions. Stop by and see them.



Bring to Reception Hall or Café



### CRAFT GROUP NEEDS BUTTONS

The craft group has found a few projects that use buttons to make for the fall fair. We are looking for flat buttons, any size, in white, red and green. If you have any extra to donate, please put them in the "Button" box on the back table in Reception Hall.